

x08.02.08.005



Product Benefits

1. Aluminum body, easy to install, high performance
2. High efficiency > 100 Lumen/watt
3. CLASS II Liable external driver
4. High impact resistance (IK08)

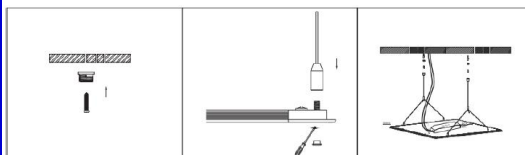
Specification

CREP 60X60-40W

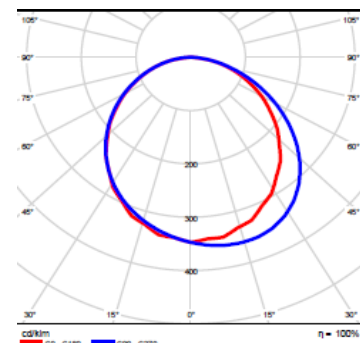
40W can replace >4X18W T8

Light Source	SMD 2835
Driver	CLASS II Meanwell/Lifud (external)
Applied luminous efficiency	104 LM/W
Luminous Flux	4,000lm (4000K)
Optic	120 degrees
Power Consumption	40W
Input Voltage	100~240VAC,50/60Hz
Impulse protection	N/A
Color Temperature	3000K/4000K/5000K/6500K
CRI	>80
Lifespan	35,000+hours
Working Temperature	-10 to 45 degree
Protection Rating	IP40
Power Factor	> 0.9
Lighting Size	60X60X10MM
Packing Size (4 PCS)	712*712*190MM
Hanging type	ceiling mount, or hanged
IK	8
Net Weight	1.5KG
Certification	FCC,CE and RoHS

Dimension



Optical application



08.02.08.007



Product Benefits

1. Aluminum body, easy to install, high performance
2. High efficiency > 100 Lumen/watt
3. CLASS II Liabe external driver
4. High impact resistance (IK08)

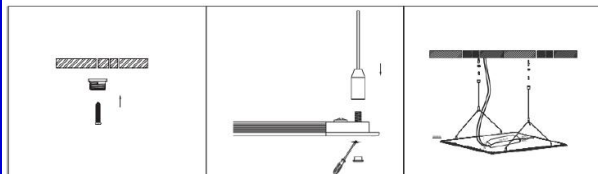
Specification

CREP 30X120-40W

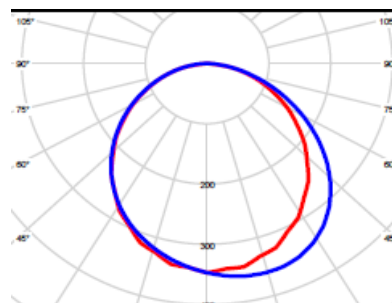
40W can replace >2X58W T8

Light Source	SMD 2835
Driver	CLASS II Meanwell/Lifud (external)
Applied luminous efficiency	104 LM/W
Luminous Flux	4,000lm (4000K)
Optic	120 degrees
Power Consumption	40W
Input Voltage	100~240VAC,50/60Hz
Impulse protection	N/A
Color Temperature	3000K/4000K/5000K/6500K
CRI	>80
Lifespan	35,000+hours
Working Temperature	-10 to 45 degree
Protection Rating	IP40
Power Factor	> 0.9
Lighting Size	295X1195X10MM
Packing Size (4 PCS)	1275*190*712MM
Hanging type	Wall mount, or hanged
IK	8
Net Weight	1.5KG
Certification	FCC,CE and RoHS

Dimension



Optical application



08.02.006



Product Benefits

1. Aluminum body, easy to install, high performance
2. High efficiency > 100 Lumen/watt
3. CLASS II Liabile external driver
4. High impact resistance (IK08)

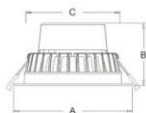
Specification

CREP D200-25W

25W can replace >2X26W PL

Light Source	SMD 2835
Driver	CLASS II Meanwell/Lifud (external)
Applied luminous efficiency	100 LM/W
Luminous Flux	2,500lm (4000K)
Optic	120 degrees
Power Consumption	25W
Input Voltage	100~240VAC,50/60Hz
Impulse protection	N/A
Color Temperature	3000K/4000K/5000K/6500K
CRI	>80
Lifespan	35,000+hours
Working Temperature	-10 to 45 degree
Protection Rating	IP40
Power Factor	> 0.9
Lighting Size	D200mm
Packing Size (4 PCS)	250*250*50MM
Hanging type	internal ceiling
IK	8
Net Weight	0.2KG
Certification	FCC,CE and RoHS

Dimension



Product Name	A	B	C
3' Downlight	D110	74	D86
4' Downlight	D140	74	D114.7
6' Downlight	D190	77	D154
8' Downlight	D228	77	D192



Optical application

